

MONTHLY MEMBERSHIP PROGRESS REPORT

LOCATION IOWA

District 9 SE

Results as of: 6/30/2021

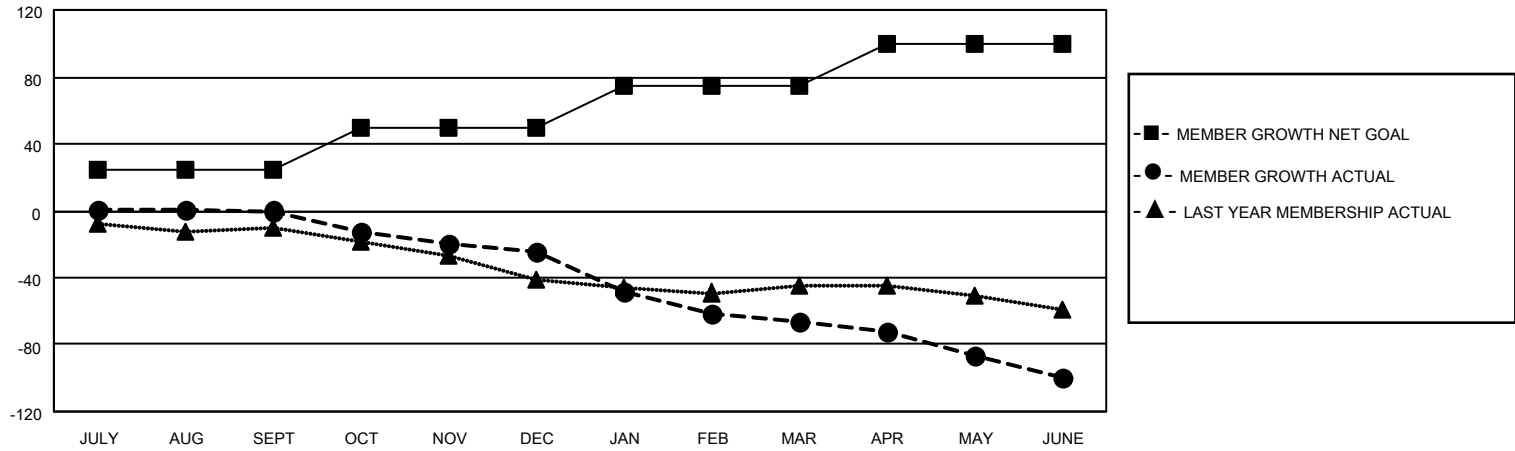
Clubs			
RESULTS FOR 2020-2021			
QUARTER	NEW CLUB GOAL	NEW CLUBS	DROPPED CLUBS
JULY/AUG/SEPT	0	0	0
OCT/NOV/DEC	0	0	0
JAN/FEB/MAR	1	0	1
APR/MAY/JUNE	0	0	1

Members			
RESULTS FOR 2020-2021			
QUARTER	MEMBER GROWTH NET GOAL	MEMBER GROWTH ACTUAL	DROPPED MEMBERS ACTUAL (including transfers)
JULY/AUG/SEPT	25	25	24
OCT/NOV/DEC	25	10	33
JAN/FEB/MAR	25	3	44
APR/MAY/JUNE	25	35	68

GOALS AND ACTUAL NEW CLUBS CUMULATIVE



GOALS AND ACTUAL MEMBERS CUMULATIVE



DROPPED CLUBS: 2	25 CLUBS OF 48 ADDED 1 OR MORE NEW MEMBERS	<u>GENDER DISTRIBUTION</u> MALE 625 (67.42%) FEMALE 302 (32.58%)
<u>DROPPED MEMBERS</u> DECEASED 25 CLUB CANCELLED 1 OTHER 144 TOTAL 170	CLICK HERE FOR CUMULATIVE MEMBERSHIP DATA	TOTAL FAMILY UNIT MEMBERS 194 FAMILY MEMBERS PAYING HALF DUES 98